

Ellsworth Public Library Building Campaign



The mission of the Ellsworth Public Library is to provide quality materials, services, resources and lifelong learning opportunities which fulfill educational, informational, cultural, and recreational needs of the entire community in an atmosphere that is welcoming, respectful, and businesslike.

FACTS:

- in 2019:**
- 2,823 people were Ellsworth Public Library cardholders
 - 65,172 items were checked out
- in the last 10 years:**
- programs offered have increased by 84%, from 150 to 272 programs
 - program attendance has increased 48% from 3,525 to 5,213
 - almost 40% of programs are held off site due to lack of existing space
 - **SAME LOCATION FOR 45 YEARS, SAME SPACE FOR 25 YEARS**

See how we stack up against our neighboring libraries!

Library	Municipal Population	Circulation	Building Sq. Ft.
Plum City	604	22,344	3,000
Elmwood	808	14,374	3,000
Woodville	1354	25,593	4,416
Spring Valley	1,352	29,927	4,500
Roberts	1,804	75,622	7,260
Hammond	1,922	46,711	2,300
Ellsworth	3,278	65,172	2,880
Baldwin	3,957	59,746	7,345
Prescott	4,272	50,765	6,556
River Falls	15,510	271,177	36,000

HOW DOES EPL BRING THE COMMUNITY TOGETHER NOW?

- safe, public space for kids after school, for people during inclement weather, for job coaches, therapists, social service visits, tutoring, etc. (not private)
- educational/fun programs for all ages
- free wi-fi
- unconventional items to check out: blood pressure kits, wi-fi hotspots, literacy backpacks, launchpad tablets for kids, power meter, books, DVDs, music CDs, audio books, magazines for check-out
- printing, copying, scanning, faxing
- sitting area with a coffee machine
- free ebooks and downloadable audio books
- a place for community members to show off their talents

HOW DOES THE EPL BUILDING PROJECT MEET OUR COMMUNITY'S NEEDS?

- **private spaces** for studying, job coaches, therapists, social service visits, tutoring, in small meeting spaces
- large meeting room for **civic/community functions**
- **improved handicapped accessibility**
- **separate, welcoming spaces** for differing needs and ages
- educational/fun programs for all ages **held at the library**
- **comfortable sitting areas** with a coffee machine
- **wider variety and number** of books, DVDs, CDs available for check-out
- **increased space for unconventional items** to check out with increased space
- **larger display spaces** for local talent

A LARGER SPACE IS NEEDED TO EXPAND AND FULFILL OUR COMMUNITY'S NEEDS!

Ellsworth Public Library Building Campaign



Your pledge is vital to creating a library that meets the needs of our community!

COST:

- minimum preliminary budget \$1,416,149
- \$595,000 from library funds
- \$500,000 from Village of Ellsworth
- minimum of \$350,000 from pledges, grants and smaller fundraising efforts

ECONOMIC IMPACT:

- a percentage of the library's 2,800 cardholders not only visit the library, but complete a longer list of errands while in town, spending their dollars at local businesses
- positive impact on commercial and residential property values
- makes our downtown look alive and vibrant

THE PLAN:

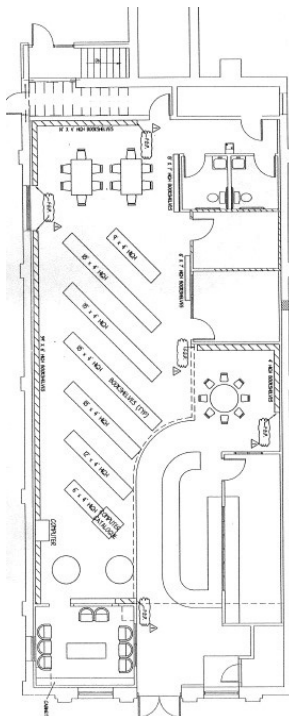


KINNE STREET VIEW



MAIN STREET VIEW

**EXISTING SPACE:
2,880 SQ. FEET**



**FUTURE MAIN LEVEL SPACE:
11,649 SQ. FEET**

